

Microsoft®

Microsoft® Visual C++® 6.0



Member of Microsoft Visual Studio™



Tap into the power and productivity of Microsoft Visual C++ 6.0. Take advantage of robust component development, powerful database tools, and full Internet support to build strategic business solutions. With Standard, Professional, and Enterprise editions, Visual C++ meets the needs of any developer.

Product Highlights

Microsoft Visual C++ is the most productive C++ tool for creating the highest-performance applications for Windows® and the Web. Nearly all world-class software, ranging from the leading Web browsers to mission-critical corporate applications, is built using the Microsoft Visual C++ development system. Visual C++ 6.0 brings a new level of productivity to C++, without compromising flexibility, performance, or control.

Maximize your programming productivity.

Increase development speed and greatly simplify coding with IntelliSense® Technology. On-the-fly syntax and programming assistance eliminate the need to memorize complex syntax, parameters, and object properties.

Get faster turnaround with new Edit and Continue in the debugger. Developers can edit code while debugging without having to quit the debugging session, rebuild, restart the debugger, and return the application to the state where the problem occurred.

Save development time with Dynamic ClassView updating. When new classes, variables, and member functions are

added, ClassView and WizardBar are updated immediately.

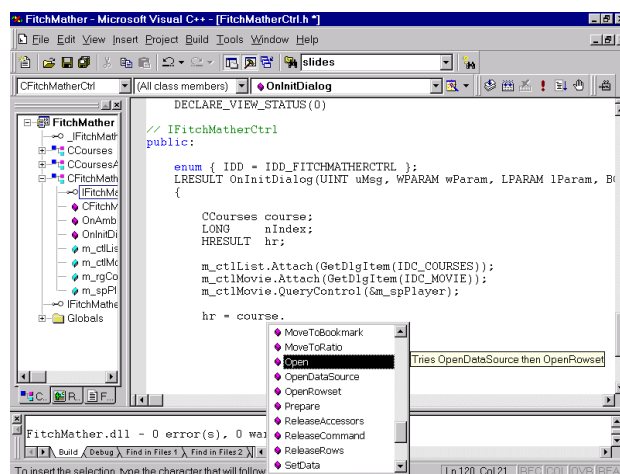
Easily and seamlessly integrate the functionality of Microsoft Word, Microsoft Excel, and other applications with Active Document Containment. Users get the features and richness they are accustomed to while the developer writes less code.

Quickly generate functional, full-featured applications automatically. New and enhanced wizards make developers productive at completing the widest range of tasks, including support for many new technologies.

Create the highest-performance applications.

Compile more rapidly than ever. Compile time on large projects has been reduced by up to 30 percent, without sacrificing any optimizations.

Improve application performance with more control over DLL loading. The Delay Load Imports linker option



Auto List Members is one example of IntelliSense Technology in Visual C++ 6.0. Here the user is provided with a context-sensitive dropdown menu of methods and variables.

allows applications to load DLLs only when and if they are needed to continue execution reducing startup times and memory usage.

Improve load time with less code overhead. Compiled code has a smaller footprint due to the increased granularity of the Microsoft Foundation Classes (MFC).

Executables now run faster. New optimizing keywords have been added to those already recognized by the compiler to ensure that applications access the optimizations they need, given their target platform and systems.

Support for the ANSI/ISO C++ specification includes support for the newest keywords and types, including *bool*, *explicit*, *false*, *mutable*, *true*, and *typename*. *Array new* and *delete* have also been added.

Take advantage of the newest Internet technologies.

Easily give your application the compelling look and feel of Microsoft Internet Explorer 4.0 with MFC support for the Common Controls. Drag and drop any of these controls to create intuitive and flexible user interfaces.

Create multimedia-based, highly interactive Dynamic HTML Web pages that take full advantage of Internet Explorer 4.0 and leverage your existing skills and code.

Integrate the Web into your MFC applications by building Web browsers into MFC front ends. Use Dynamic HTML in your custom browsers to add richness, manipulate data on-the-fly, and reduce server roundtrips.

Maximize code reuse by easily combining and extending existing ActiveX® and Windows controls. Now developers can visually create Composite Controls through the Active Template Library (ATL) by simply dragging and dropping existing controls onto a form.

Easily customize your Web servers with the ISAPI Extension Wizard and the WinInet classes in MFC.

Get the latest platform and component development support.

Create the leanest, most robust ActiveX Controls and COM objects with comprehensive native COM compiler support and write less code to do it.

Develop the smallest, most scalable server-side components rapidly with the Active Template Library (ATL). Use wizards to easily create COM components and automatically register them in Microsoft Transaction Server.

Effectively reuse code and components. Find, track, catalog, and share components within your development team and across your organization with the integrated Visual Component Manager and Microsoft Repository.

Build world-class applications with industry-standard MFC, the most robust, productive, and widely used application framework available for Windows.

Simplify development for the latest Microsoft platform technologies. Use wizards to create projects for Windows NT® clusters and snap-ins for Microsoft Management Console.

Access data flexibly with the highest performance.

Use the comprehensive, integrated Visual Database Tools to visually design and modify database schema, view tables, modify data, and create reusable queries and stored procedures for Microsoft SQL Server™ 6.5 or later and Oracle 7.3.3+ databases.

Greatly simplify high-performance access to any data source relational or non-relational, e-mail and file systems, text and graphics, custom business objects, and more with new OLE DB wizards.

Quickly develop data applications using ActiveX data-bound controls. ActiveX Data Objects (ADO) provide users with simplified access to any data exposed by OLE DB.

Interactively debug SQL Server stored procedures and triggers from within the IDE using remote SQL debugging.

Develop high-performance customizations for SQL Server. Wizard support for creating Extended Stored Procedures gives you the performance of natively compiled code and the flexibility of the entire Win32® API.

Achieve scalable enterprise-development.

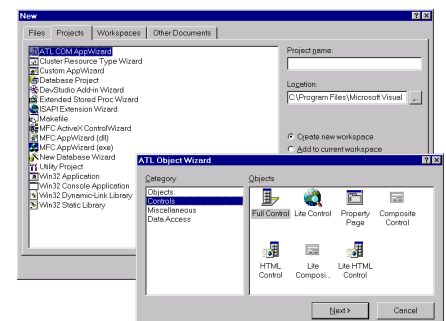
Collaborate, share, and secure source code on large projects with integrated Visual SourceSafe™ 6.0 version control system.

Take advantage of legacy support provided by Microsoft SNA Server 4.0 to access data and integrate code with mainframe systems and transaction services. Includes comprehensive mainframe connectivity options for databases running on AS/400 and IBM mainframes.

Prototype and test enterprise applications with Microsoft SQL Server 6.5 Developer Edition, a scalable, high-performance database management system for Windows NT based systems.

Design application architectures and component interfaces to organize team development with Visual Modeler, an easy-to-use modeling tool. It can generate and regenerate code as you refine your models.

Test message queuing solutions for fault-tolerant applications with Microsoft Message Queue. MSMQ offers high scalability and the ability to operate over networks that are occasionally unavailable.



Visual C++ 6.0 contains many new and enhanced wizards, including project wizards for creating applications and wizards for creating specific types of COM components and ActiveX Controls.

Product Comparison Chart

Visual C++ Feature	Benefit	Enterprise	Professional	Standard
DEVELOPER PRODUCTIVITY				
NEW! Included tutorials	Master Visual C++ programming tasks quickly using the printed step-by-step tutorial and online C++ instruction.			✓
NEW! IntelliSense Technology	Increase productivity and simplify coding with technology that eliminates the need to memorize complex syntax, parameters, and object properties.	✓	✓	✓
NEW! Edit and Continue	Make and apply code changes while debugging, maintain application state, and then continue on without rebuilding for faster turnaround.	✓	✓	✓
NEW! Dynamic ClassView updating	Easily navigate your code and save time as changes, such as adding a variable or method, are immediately reflected in ClassView.	✓	✓	✓
ENHANCED! Wizards	Save time with numerous new and enhanced wizards throughout the product for MFC, ATL, and more.	✓	✓	✓
HIGHEST PERFORMANCE AND CONTROL				
NEW! Faster compiler throughput	Get compiler throughput on projects that's as much as 30 percent faster without sacrificing any optimizations.	✓	✓	✓
ENHANCED! Optimizing compiler	Take advantage of industry-leading performance and the number-one optimizing compiler for the smallest, fastest executables.	✓	✓	
NEW! Delay Load Imports	Speed applications by deferring DLL loading until necessary for continuing execution.	✓	✓	
NEW! Faster MFC Applications	MFC applications run faster with better granularity and less code overhead.	✓	✓	
PLATFORM, INTERNET, AND COMPONENT DEVELOPMENT				
ENHANCED! Microsoft Foundation Classes (MFC)	Build world-class applications with MFC, the most robust, productive, and widely used application framework available for Windows.	✓	✓	✓
NEW! Internet Support	Integrate the Web into MFC applications, including Common Controls from Microsoft Internet Explorer 4.0. Use Dynamic HTML to add richness, manipulate data, and reduce server roundtrips.	✓	✓	✓
ENHANCED! Active Template Library (ATL)	Quickly create the smallest, most scalable server-side components and ActiveX Controls.	✓	✓	✓
NEW! Composite Controls	Visually combine existing ActiveX and Windows controls to create new controls in the Active Template Library.	✓	✓	✓
NEW! Visual Component Manager	Share a wide range of component types, enabling effective component and code reuse.	✓		
ENTERPRISE APPLICATION DEVELOPMENT				
NEW! OLE DB consumer and provider wizards	Greatly simplify high-performance access to any data source—with new wizards for building OLE DB consumers and providers.	✓	✓	✓
NEW! Enterprise Visual Database Tools	Visually design databases and views, and create and test stored procedures for Microsoft SQL Server 6.5 or later and Oracle 7.3.3+ databases.	✓		
Microsoft SQL Server 6.5 Developer Edition (for Windows NT only)	Easily develop and test enterprise database applications with a scalable, high-performance database management system.	✓		
ENHANCED! Microsoft Visual SourceSafe 6.0	Collaborate, share, and secure source code using integrated version control.	✓		
NEW! Support for IBM's System Network Architecture (SNA) Protocol	Access data and integrate code with mainframe systems and transactions services, preserving investments in existing AS/400 and IBM mainframe platforms.	✓		

Specifications

To use Microsoft Visual C++ 6.0 Enterprise Edition, you need:

- PC with a Pentium-class processor; Pentium 90 or higher processor recommended
- Microsoft Windows 95 or later operating system or Microsoft Windows NT operating system version 4.0 with Service Pack 3 or later (Service Pack 3 included)
- 24 MB of RAM for Windows 95 or later (32 MB recommended); 24 MB for Windows NT 4.0 (32 MB recommended)
- Microsoft Internet Explorer 4.01 Service Pack 1 (included)
- Hard-disk space required:
 - Typical installation: 305 MB
 - Maximum installation: 405 MB
- Additional hard-disk space required for the following products:
 - Internet Explorer: 43 MB typical, 59 MB maximum
 - MSDN™: 57 MB typical, 493 MB maximum
 - Windows NT 4.0 Option Pack: 20 MB for Windows 95 or later; 200 MB for Windows NT 4.0
- Microsoft SQL Server 6.5 and Microsoft SNA Server 4.0 run on Windows NT 4.0 only, and require the following additional hard-disk space:

- SQL Server: 80 MB typical, 95 MB maximum
- SNA Server: 50 MB typical, 100+ MB maximum
- CD-ROM drive
- VGA or higher-resolution monitor; Super VGA recommended
- Microsoft Mouse or compatible pointing device

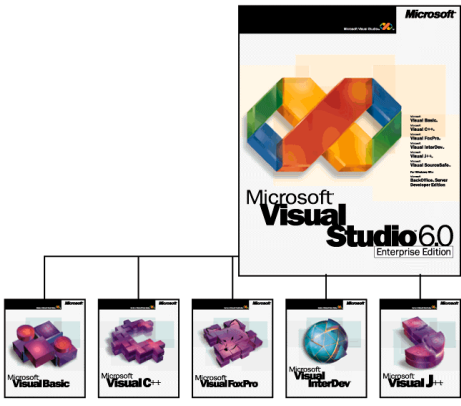
To use Microsoft Visual C++ 6.0 Professional Edition, you need:

- PC with a Pentium-class processor; Pentium 90 or higher processor recommended
- Microsoft Windows 95 or later operating system or Microsoft Windows NT operating system version 4.0 with Service Pack 3 or later (Service Pack 3 included)
- 24 MB of RAM for Windows 95 or later (32 MB recommended); 24 MB for Windows NT 4.0 (32 MB recommended)
- Microsoft Internet Explorer 4.01 Service Pack 1 (included)
- Hard-disk space required:
 - Typical installation: 290 MB
 - Maximum installation: 375 MB
- Additional hard-disk space required for the following products:
 - Internet Explorer: 43 MB typical, 59 MB maximum
 - MSDN: 57 MB typical, 493 MB maximum

- Windows NT 4.0 Option Pack: 20 MB for Windows 95 or later; 200 MB for Windows NT 4.0
- CD-ROM drive
- VGA or higher-resolution monitor; Super VGA recommended
- Microsoft Mouse or compatible pointing device

To use Microsoft Visual C++ 6.0 Standard Edition, you need:

- PC with a 486/66 MHz or higher processor; Pentium 90 or higher processor recommended
- Microsoft Windows 95 or later operating system or Microsoft Windows NT operating system version 4.0 with Service Pack 3 or later (Service Pack 3 included)
- 24 MB of RAM for Windows 95 or later (32 MB recommended); 24 MB for Windows NT 4.0 (32 MB recommended)
- Microsoft Internet Explorer 4.01 Service Pack 1 (included)
- Hard-disk space required:
 - Typical installation: 225 MB
 - Maximum installation: 305 MB
- Additional hard-disk space required for the following products:
 - Internet Explorer: 43 MB typical, 59 MB maximum
 - MSDN: 57 MB typical, 493 MB maximum
- CD-ROM drive
- VGA or higher-resolution monitor; Super VGA recommended
- Microsoft Mouse or compatible pointing device



Build mission-critical enterprise solutions with Microsoft Visual Studio™ 6.0 Enterprise Edition, the complete development suite. It includes:

- Microsoft Visual Basic® 6.0 Enterprise Edition development system
- Microsoft Visual C++ 6.0 Enterprise Edition development system
- Microsoft Visual FoxPro® 6.0 Enterprise Edition database development system
- Microsoft Visual InterDev™ 6.0 Enterprise Edition Web development system
- Microsoft Visual J++™ 6.0 Enterprise Edition development system for Java
- Microsoft Visual SourceSafe 6.0 version control system
- Microsoft BackOffice® Server Developer Edition



For more information about Microsoft Visual C++, visit <http://msdn.microsoft.com/visualc/>

For the latest developer news and more information on Microsoft's broad range of resources for developers, including support programs, events, training, and the MSDN Library Online, visit MSDN Online at <http://msdn.microsoft.com/>

TO ORDER:

To order Microsoft Visual C++ or other Microsoft visual tools, or to receive a reseller referral in the United States or Canada, call (800) 621-7930, Dept. A334DS. Outside the United States and Canada, please contact your local Microsoft subsidiary. Customers who are deaf or hard-of-hearing can reach Microsoft text telephone (TTY/TDD) services by calling (800) 892-5234 in the United States or (905) 568-9641 in Canada.

© 1998 Microsoft Corporation. All rights reserved. This data sheet is for informational purposes only. MICROSOFT MAKES NO WARRANTIES, EXPRESS OR IMPLIED, IN THIS SUMMARY. The names of companies, products, people, characters, and/or data mentioned herein are fictitious and are in no way intended to represent any real individual, company, product, or event, unless otherwise noted.

Microsoft, ActiveX, BackOffice, the BackOffice logo, IntelliSense, MSDN, Visual Basic, Visual C++, Visual FoxPro, Visual InterDev, Visual J++, Visual SourceSafe, Visual Studio, the Visual Studio logo, Win32, Windows, the Windows logo, and Windows NT are either registered trademarks or trademarks of Microsoft Corporation in the United States and/or other countries.

Other product and company names mentioned herein may be the trademarks of their respective owners.

Microsoft Corporation One Microsoft Way Redmond, WA 98052-6399 USA

Microsoft Canada Inc. 320 Matheson Blvd. West Mississauga, ON L5R 3R1 Canada

0798 Part No. 098-72204 (color)

Part No. 098-72203 (black and white)